

# STRUCTURAL PRECAST CONCRETE FRAMES FOR COMMERCIAL / OFFICE SPACE, HEALTHCARE FACILITIES AND EDUCATION

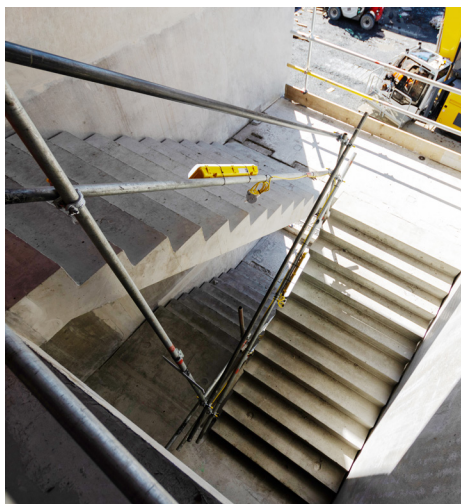


With inherent fire properties, robust design, flat soffits and an increased build speed have you considered a precast frame in lieu of a steel or insitu frame?

FP McCann provide a full structural frame design, including cores, columns, beams, stairs and landings which can all be designed for a 2-hour fire rating. We manufacture our products inhouse in a factory-controlled environment and offer a full installation service.

## BENEFITS OF PRECAST CONCRETE FRAMES

- Offsite construction enables a high standard of workmanship in factory controlled conditions
- Wide variety of quality finishes achievable and concrete can be left exposed
- Installation is quiet, there is no storage space required and it is suitable for tight construction sites
- Speed of construction is increased as follow-on trades can commence much earlier
- Fire-resistant – concrete has its own built-in fire resistance
- The high thermal capacity of concrete can reduce the demand for heating, ventilation and air conditioning, unlike alternative types of frames
- Maintenance-free – no need to paint or periodically replace beams as you would with alternative types
- Windows, doors and conduits can be pre-installed



To get in touch for a project specific quotation  
contact: [connor.mccloy@fpmccann.co.uk](mailto:connor.mccloy@fpmccann.co.uk)  
or visit [fpmccann.co.uk](http://fpmccann.co.uk) for further information