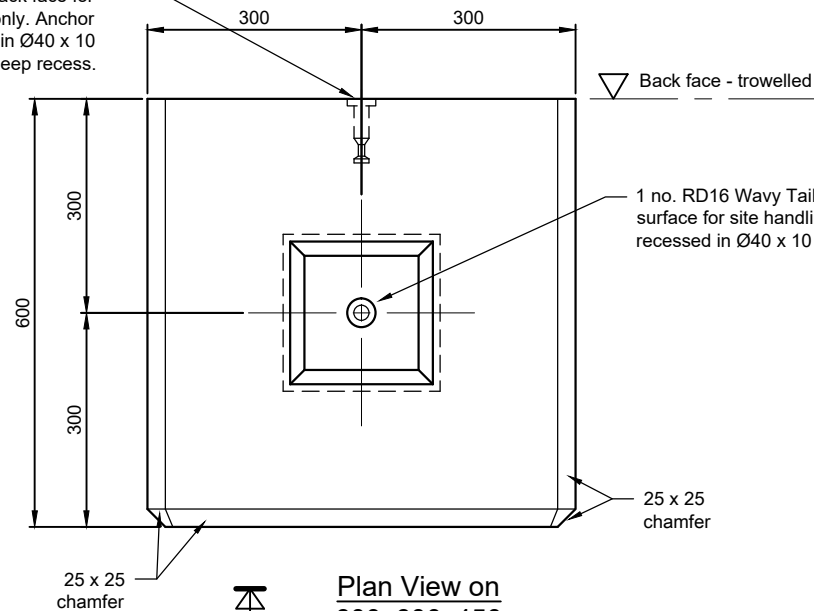


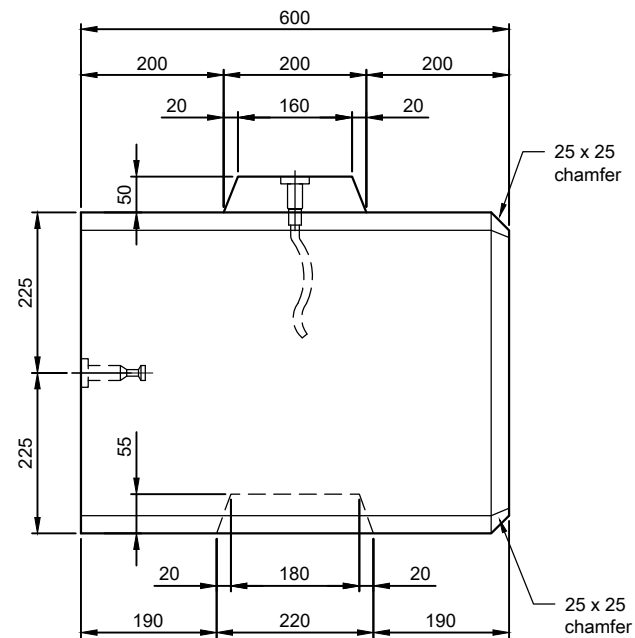
View on Arrow A

1 no. RD16 Crown foot anchor in back face for de-mould only. Anchor recessed in Ø40 x 10 deep recess.

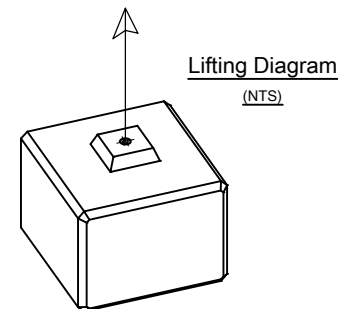
Plan View on
600x600x450
Easi-Bloc

1 no. RD16 Wavy Tail anchor in top surface for site handling. Anchor recessed in Ø40 x 10 deep recess.

Back face - trowelled



View on Arrow B

**1. Handling**

a) Unit Volume / Weight

Unit Ref	Volume (m³)	Weight (T)	Weight +5% (T)
600x600x450	0.160	0.400	0.420

Weight is based on 2.5 T/m³

+ 5% is recommended for sizing lifting equipment.

b) All lifting points shall be used as specified below:
Also refer to lifting diagram on drawing.

System	Qty	CFS Reference	SWL (T)
Rd16 Wavy Tail Anchor	1	CFS-WAL-16-216	1.2

c) Lifting Loop reference for use with Rd16 Wavy Tail Anchors:
CFS Part No. = CFS-LL-16.

d) Wavy Tail Anchor recesses to be filled in on site by others.

e) All de-mould lifting points shall be used as specified below:

System	Qty	CFS Reference	SWL (T)
Rd16 Crown Foot Anchor	1	CFS-CRA-16-80	1.2

f) Lifting Loop reference for use with Rd16 Crown Foot Anchors:
CFS Part No. = CFS-LL-16.

g) De-mould Anchor recesses to be filled in by F. P. McCann prior to delivery.

2. Concrete

a) Lifting strength based on 2 cubes = 15 N/mm²

b) Characteristic 28 day cube strength = 50 N/mm²

c) Concrete provides Design Chemical Class 2 (DC2) to Special Digest 1, Table D2.

3. Manufacture

a) Manufactured to BS EN 13369:2013

b) Tolerances to BS EN 13670:2009.

c) Finishing:

	Back Face	All Other Faces
Class	Steel Float	A

d) Marking. Units shall be indelibly marked to show:
unit reference i.e. 600x600x450
mould reference
cast date**4. Design**

a) Design Life: >100 years.

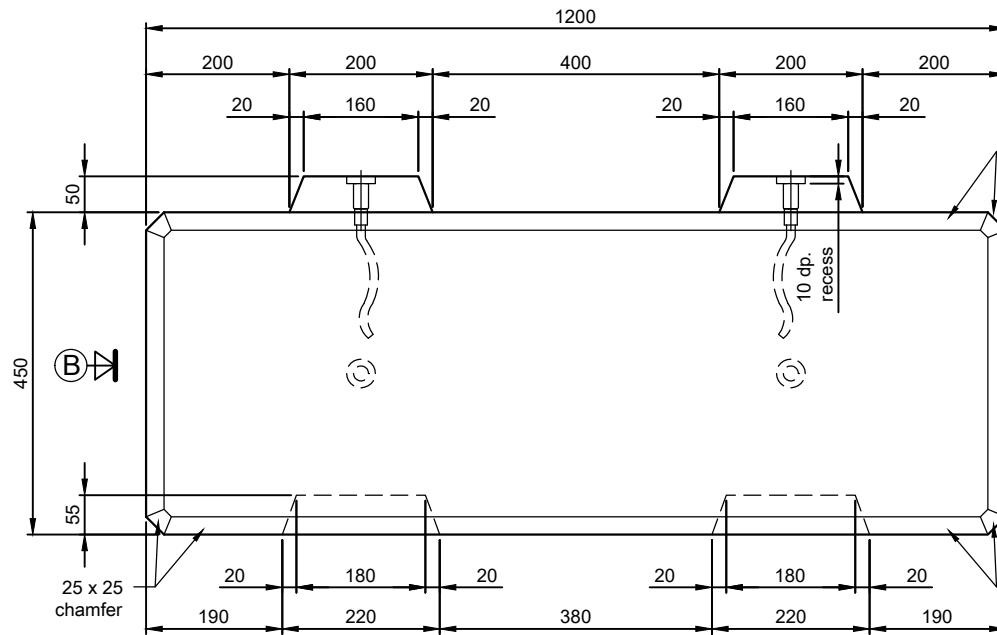
5. Manufacture Tolerances:

Allowable dimensional variations shall not exceed the following:

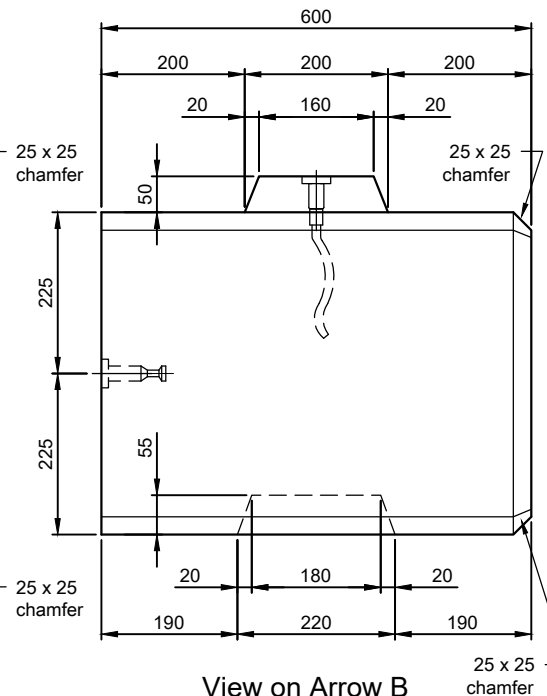
Length	± 10mm
Width	± 10mm
Height	± 10mm

0	05/09/14	Original issue		MT	-	
Rev	Date	Revision detail			By Chk'd	
Standard Easi-Bloc. 600 x 600 wide 450 high unit.		Drawn: MT		Scale: 1:7.5		Status:
		Date: 5/9/14		Chk'd: CB		Manufacture
		Drawing no: MCEB/600x600x450				Sept 2014
						Rev: 0

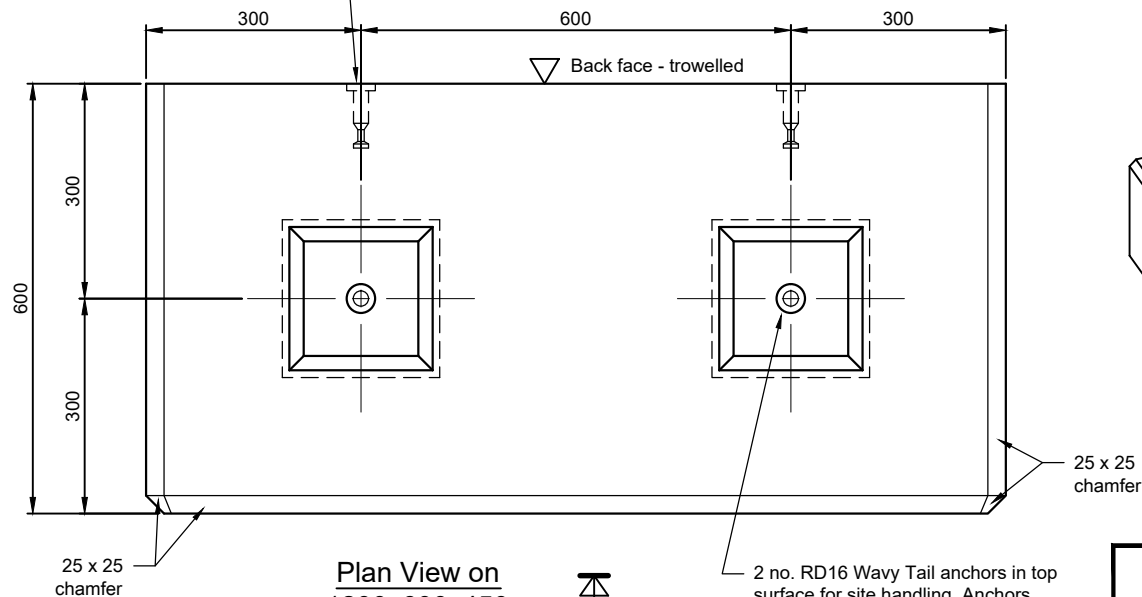
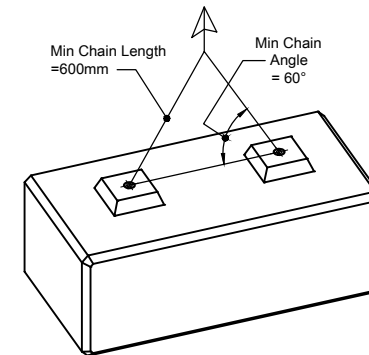




View on Arrow A



View on Arrow B

Plan View on
1200x600x450
Easi-BlocLifting Diagram
(NTS)

Note:
Both Lifting
Points must
be used.

1. Handling

a) Unit Volume / Weight

Unit Ref	Volume (m³)	Weight (T)	Weight +5% (T)
1200x600x450	0.321	0.803	0.843

Weight is based on 2.5 T/m³

+ 5% is recommended for sizing lifting equipment.

b) All lifting points shall be used as specified below:
Also refer to lifting diagram on drawing.

System	Qty	CFS Reference	SWL (T)
Rd16 Wavy Tail Anchor	2	CFS-WAL-16-216	1.2

c) Lifting Loop reference for use with Rd16 Wavy Tail Anchors:
CFS Part No. = CFS-LL-16.

d) Wavy Tail Anchor recesses to be filled in on site by others.

e) All de-mould lifting points shall be used as specified below:

System	Qty	CFS Reference	SWL (T)
Rd16 Crown Foot Anchor	2	CFS-CRA-16-80	1.2

f) Lifting Loop reference for use with Rd16 Crown Foot Anchors:
CFS Part No. = CFS-LL-16.

g) De-mould Anchor recesses to be filled in by F. P. McCann prior to delivery.

2. Concrete

a) Lifting strength based on 2 cubes = 15 N/mm²

b) Characteristic 28 day cube strength = 50 N/mm²

c) Concrete provides Design Chemical Class 2 (DC2) to Special Digest 1, Table D2.

3. Manufacture

a) Manufactured to BS EN 13369:2013

b) Tolerances to BS EN 13670:2009.

c) Finishing:

	Back Face	All Other Faces
Class	Steel Float	A

d) Marking. Units shall be indelibly marked to show:
unit reference i.e. 1200x600x450
mould reference
cast date**4. Design**

a) Design Life: >100 years.

5. Manufacture Tolerances:

Allowable dimensional variations shall not exceed the following:

Length	± 10mm
Width	± 10mm
Height	± 10mm

0	05/09/14	Original issue	MT	-
Rev	Date	Revision detail	By	Chk'd

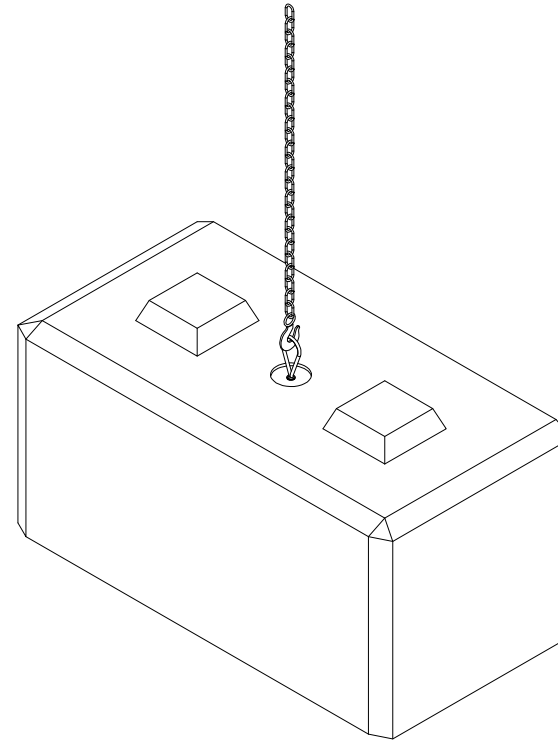
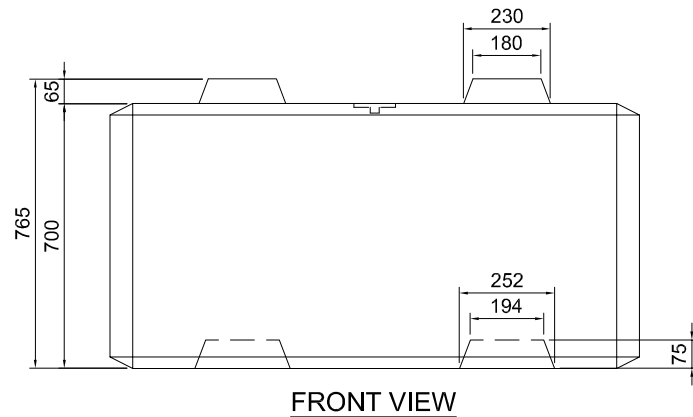
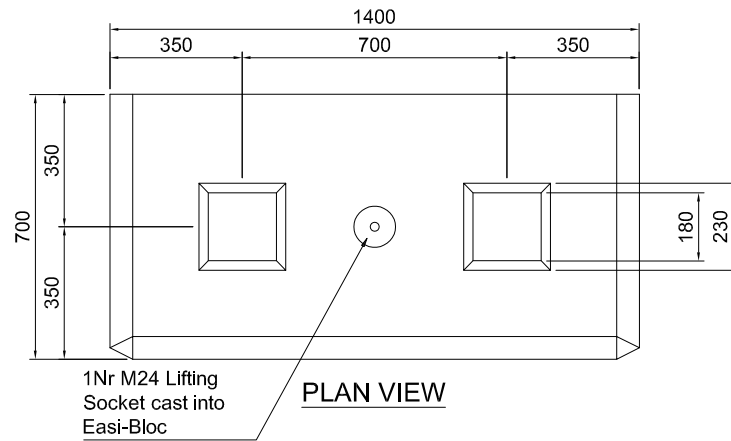


Contract / Title:

Standard Easi-Bloc.
1200 long x 600 wide
x 450 high unit.

Drawn: MT	Scale: 1:7.5	Status:
Date: 5/9/14	Chk'd: CB	Manufacture
Drawing no:		Sept 2014
MCEB/1200x600x450	Rev:	0

DO NOT SCALE, IF IN DOUBT PLEASE ASK.



Notes:

1. **Handling**

a) Unit Volume / Weight

PART	VOL (M³)	WEIGHT (T)	WT +5% (T)
Easi-Bloc	0.678	1.763	1.851

Weight is based on 2.67/m³
+5% is recommended for sizing lifting equipment

b) All lifting points shall be used as specified below:

SYSTEM	QUANTITY	CPS REFERENCE
Threaded Sockets & Loops	1	CPS-WAS-24-240 (2.5T SWL)

c) M24 Lifting Loops can be purchased from FP McCann

2. **Concrete**

a) Mix ref: Wet Cast Mix
b) Lifting strength based on 2 cubes = 15N/mm²
c) Characteristic 28 day cube strength = 50 N/mm²
d) Concrete provides Design Chemical Class 4 (DC4) to Special Digest 1, Table F2

3. **Manufacture**

a) Manufactured to BS EN 13369
b) Tolerances to BS EN 13369 clause 4.3.1.1
c) Finishes: As below unless indicated otherwise on drawing

CLASS	TOP	SIDES	BASE
	A	A	Steel Float

d) Marking: Units shall be indelibly marked to show:

- Unit reference
- Cast date
- Contract number or name
- Unit weight

2 (270094) Litter amended from M20 to M24 LMD -
1 (231296) Layout amended LMD -
0 (500111) Original Issue OK -

Rev Date Revision detail By CHM

FP McCann
Knockkoughrim Quarry, 3 Drumard Road, Magherafelt, BT44 6QA
Tel: +44 (0)28 7964 2658
Fax: +44 (0)28 7964 4224
www.fpmccann.co.uk

Contract: **FP McCann Standard Retaining Wall**

Title: **1400x700mm Easi-Bloc General Arrangement**

Scale: 1:20 @ A4 Status: **MANUFACTURE**

Date: JANUARY 2011
Drawn: LMD
Checked:
Drawing no: **KN-EB-1400** Rev: **2**

This document shall not be reproduced in whole or in part or relied upon by third parties for any use whatsoever without the written authority of F. P. McCann Ltd.

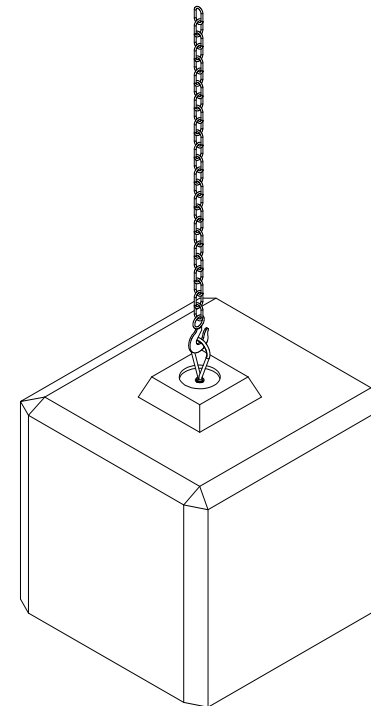
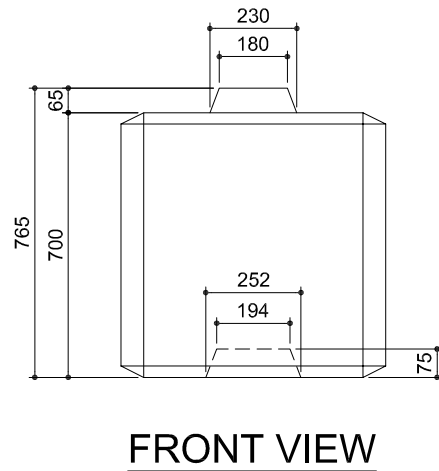
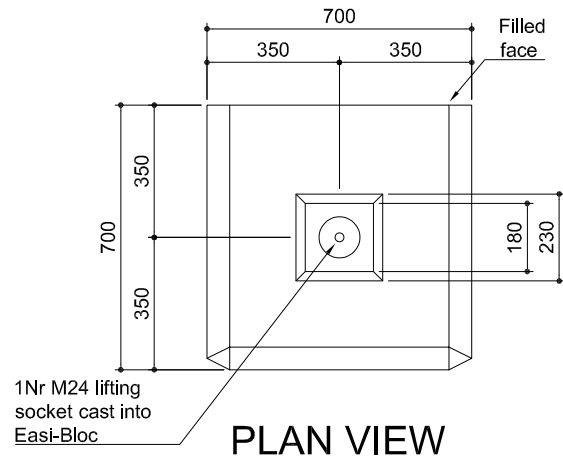
A4

1cm

1cm

A4

DO NOT SCALE, IF IN DOUBT PLEASE ASK.



TYPICAL LIFTING DIAGRAM

Notes:

1. & Handling

a) Unit Volume / Weight

PART	VOL (M³)	WEIGHT (T)	WT +5% (T)
Easi-Bloc	0.337	0.876	0.920

Weight is based on 2.67t/m³
+5% is recommended for sizing lifting equipment

b) All lifting points shall be used as specified below:

SYSTEM	QUANTITY	CFS REFERENCE
Threaded Sockets & Loops	1	CFS-RAS-24-240 (2.5T SWL)

c) M24 Lifting Loops can be purchased from FP McCann

2. Concrete

a) Mix ref: Wet Cast Mix
b) Lifting strength based on 2 cubes = 15N/mm²
c) Characteristic 28 day cube strength = 50 N/mm²
d) Concrete provides Design Chemical Class 4 (DC4) to Special Digest 1, Table F2

3. Manufacture

a) Manufactured to BS EN 13369
b) Tolerances to BS EN 13369 clause 4.3.1.1
c) Finishes: As below unless indicated otherwise on drawing

CLASS	TOP	SIDES	BASE
	A	A	Steel Float

d) Marking: Units shall be indelibly marked to show:

- Unit reference
- Cast date
- Contract number or name
- Unit weight

Rev	Date	Revision detail	By	CHKD
1	27/02/24	Lift amended from M20 to M24	LMD	-
0	20/10/20	Original Issue	LMD	-

FP McCann
Knocknoughrim Quarry, 3 Drumard Road, Magherastell, BT14 6QA
Tel: +44 (0)28 7964 2658
Fax: +44 (0)28 7964 4224
www.fpmccann.co.uk

Contract: **FP McCann Standard Retaining Wall**

Title: **700x700mm Easi-Bloc General Arrangement**

Scale:	1:20 @ A4	Status:
Date:	26.10.2020	MANUFACTURE OCT 2020
Drawn:	LMD	
Checked:		

Drawing no: **KN-EB-700** Rev: **1**

This document shall not be reproduced in whole or in part or relied upon by third parties for any use whatsoever without the written authority of F. P. McCann Ltd.