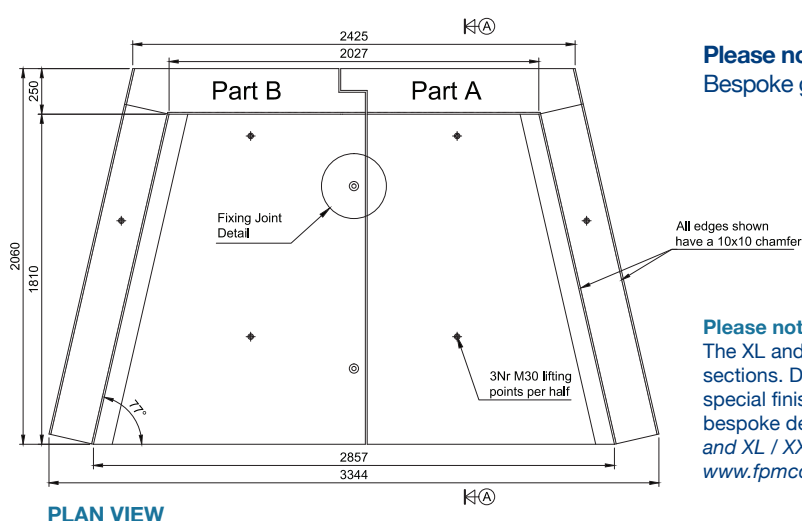
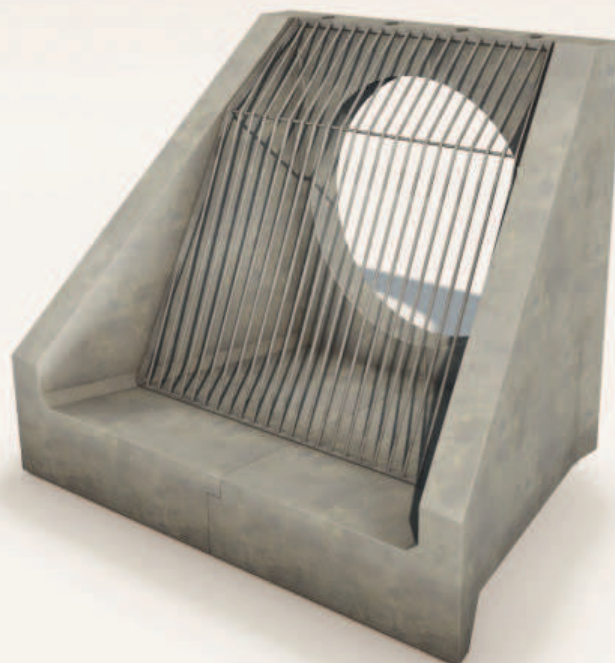


XL-T1

headwall

Pipe size: up to 1500mm

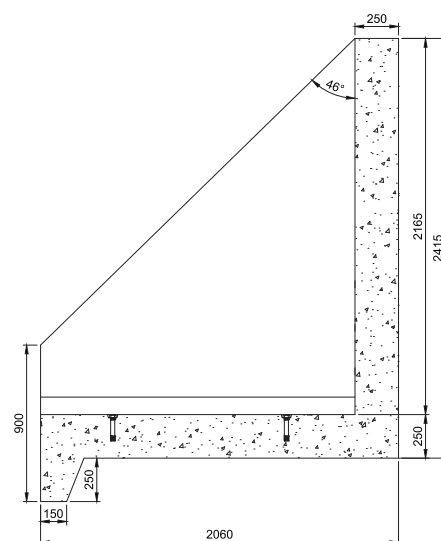
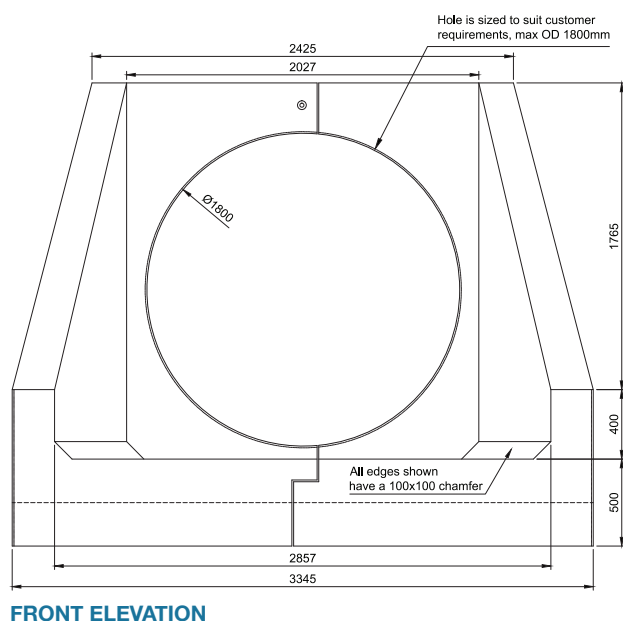


Please note:

Bespoke grates and handrails are available upon request.

Please note:

The XL and XXL headwalls are manufactured and delivered in 2 sections. Dimensions represent a complete unit. Weir walls and other special finishes can be added to any of the headwalls as part of a bespoke design package. *Installation guides for standard Headwalls and XL / XXL Headwalls are available on our website:* www.fpmccann.co.uk/headwalls



| Headwall Range | Up to and including Pipe Sizes | Max Pipe O.D. | Back Wall Height (external) | Front Wall Height (external) | Backwall Width (internal) | Front Wall Width (internal) | Headwall Length | Standard invert level (variable) | Wall Thickness | Floor Thickness | Approx. weight kg |
|----------------|--------------------------------|---------------|-----------------------------|------------------------------|---------------------------|-----------------------------|-----------------|----------------------------------|----------------|-----------------|----------------------------|
| HW XL-T1 | 1500 | 1800 | 2415 | 900 | 2027 | 2857 | 2060 | 100 | 250 | 250 | Part A 4725 Part B 4725 |