

FLEXI-FIT SEAL



Introducing the new range of sizes for FP McCanns Flexi-Fit seal.

FF150

Designed to be used in junctions and large diameter pipes.



FF150 Base

Designed to be used in manhole bases and catchpits. Lateral support is required.



FF225

Designed to be used in manhole bases and catchpits. Lateral support is required.



The Flexi-Fit seal is a time and cost saving solution for fitting lateral (or branch) pipes into larger concrete pipes, manholes, junctions, catch pits or other concrete structures, at the time of casting or retro-fitting into a cored hole.

Each seal uses three component parts to adapt its internal size to suit the lateral pipe being fitted. The user can simply remove components to increase the internal diameter of the seal. All components conform to the latest standards for below ground applications. The universal nature of the Flexi-Fit range means that any lateral pipe of the same nominal diameter can be fitted. The Flexi-Fit removes the need to purchase and store multiple seals and adaptors for different pipe materials, simplifies project planning and supports specification changes.

BENEFITS

Universal solution

Removes the need for adaptors

Can be installed in seconds

Can be cast into concrete during manufacture or cored and retro-fit

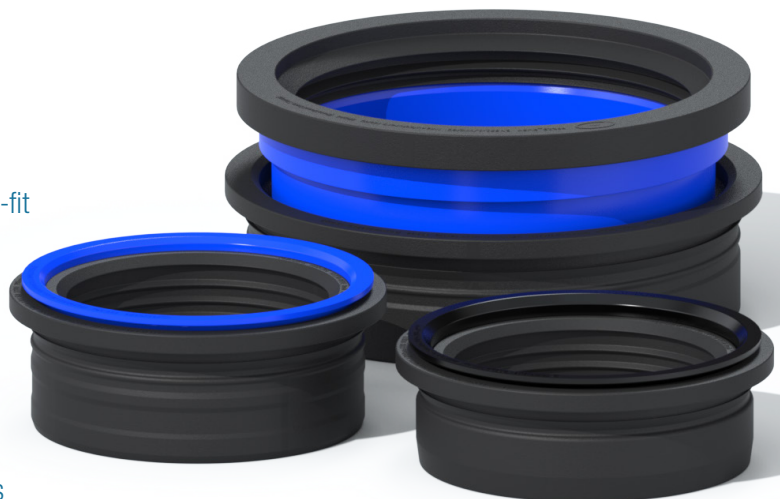
Configuration can be altered in seconds

Watertight connection for any DN150 & DN225 Lateral

Smooth transition and level invert through to the connecting structure

Designed to remove the possibility of lateral intrusion

Independently tested to 0.5 bar pressure on all adoptable laterals



WWW.FPMCCANN.CO.UK/FLEXI-FIT

THINKING PRECAST?
THINK FP MCCANN

Inner Bush →

Casting socket →

Outer Body →



Product Code	FF150 / FF150 Base / FF225
Description	DN150/DN225 Universal connector
Core Hole Size	198 +0/-1mm & 294 +0/-1mm
Material	ABS & EPDM Rubber
Pressure Rating	0.5 bar
Jetting Resistance	180 bar
Temperature Range	-50°C to 80°C constant, 100°C intermittent
Standards	BS EN 681-1:1995 WIS 4-35-01



Pipe Fitting Options

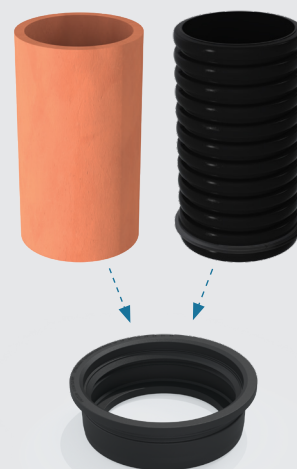
Option 1 - Full product



Option 2 - Inner Bush removed



Option 3 - Outer Body only



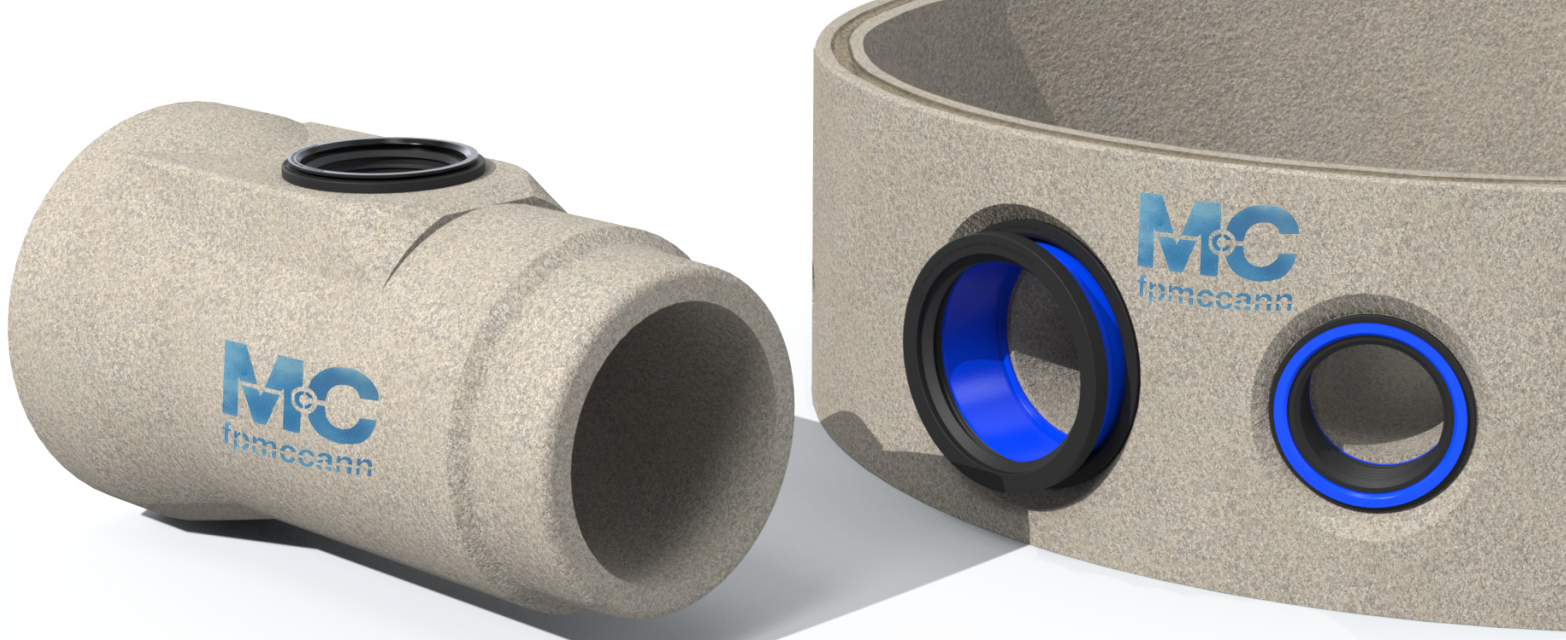
Product	Pipe Type
FF150 FF150 Base	DN150: PVC Smooth Marley Quantum Polysewer Cast Iron Ultra 3
FF225	DN225: PVC Smooth Cast Iron Ultra 3

Product	Pipe Type
FF150 FF150 Base	DN150: Ultrarib
FF225	DN225: Marley Quantum Polysewer Ultrarib

Product	Pipe Type
FF150 FF150 Base	DN150: Supersleeve Clay All Twinwall pipe types
FF225	DN225: Supersleeve Clay All Twinwall pipe types

Note: the pipe seal must be used in the first groove.

*Not suitable for Naylor Clay - adaptor required with FF150/225



Installation



5 easy steps

1. Using the correct equipment, core a 198mm or 294mm hole at the selected position into the concrete pipe, manhole or junction. Ensure the cored hole and surrounding area is clean and free from slurry/debris.
2. Remove the two inner body components from the main outer body as shown in image 2.
3. Press the rubber into the 198mm/294mm cored hole until fully seated, a little force will be required.
4. Lubricate the outside of the casting socket using water (if required).
5. Using a chock of wood and hammer (if required) drive the casting socket into the outer body evenly around the circumference.

Note: It is recommended that a diamond tipped core drill be used to core the 198mm / 294mm holes.

General Information

Flexi-Fit Seal has been certified by the British Standards Institution (BSI) as a company of assessed capability, with a quality management system which meets the requirements of BS EN ISO 9001:2015.

A materials cost calculator is available on request. For further information on FP McCann's precast drainage solutions, contact the sales team: **SCOTLAND/NI: 028 7954 9026 | ENGLAND/WALES: 01530 240000**