

catchpit

Catchpit

The catchpit effectively provides a sealed sump manhole, a monolithic precast concrete unit fitted with connector seals which can be used to connect to the following types of pipe: uPVC, twinwall, clay, ductile iron and concrete. The catchpit is designed to accommodate pipe sizes DN150 to DN450. The catchpit is designed in line with highway specification.

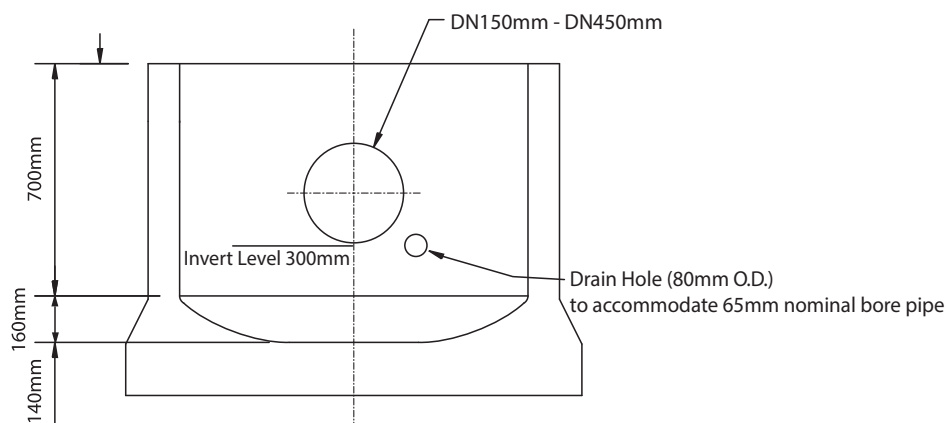
FP McCann can produce catchpits upto DN375 in a straight through orientation (180 degrees). 4-way units with orientations at 90 degrees can be produced upto DN300 only; beyond DN300 4-way orientations are not available. DN450 inlets must be cored onsite.

Benefits of using the Catchpit unit

- Creates an immediate watertight structure
- Cost benefits with reduction in construction time and resource requirement
- Economically advantageous as limited wet trades are required in the manhole construction
- Accommodates connection to all types of pipe used in road and manhole construction
- Safety benefits gained in the construction of manholes as the pre-formed sump and connector seals eliminate on site construction, thus greatly reducing labour activity within the manhole
- Increased confidence to meet industry standards
- Quality is greatly increased as construction is within the factory environment
- Eliminates material wastage associated with current in-situ method
- Yields environmental benefits with less concrete used on site and less excavated material removed from site



Catchpit Dimensions



Note: Standard unit will have an invert level of 300mm for inlet and outlet pipes. If a non-standard invert level is required, please specify when ordering.

Pipes should only be connected to the Easi-Pit using an FP McCann approved lubricant