

STORMCHANNEL™



THE HEAVY DUTY PRECAST DRAINAGE CHANNEL DESIGNED TO REMOVE SURFACE WATER

WHAT IS STORMCHANNEL™?

FP McCann's StormChannel™ is a heavy duty, precast concrete slotted drainage channel designed to remove surface water from many areas, including roads, motorways, car parks, industrial, commercial and residential areas. This helps to prevent flooding and run-off.

FP McCann offers two types of StormChannel™:

1. A precast concrete bullnosed kerb drainage channel has a linear slot drain and a profiled, oblong drainage channel.
2. A standard precast concrete drainage channel with an interrupted slot and stabiliser bars for increased stability.

StormChannel™	Length (mm)	Height (mm)	Weight (kg)	Width (mm)	Drainage Cross Section (m ²)
300 Standard	2500	550	1400	520	0.0707
400 Standard	2500	740	1700	520	0.1262
400 Kerb	2500	790	1700	520	0.1262
500 Standard	2500	805	2300	700	0.1973
600 Standard	2500	990	2600	700	0.2828

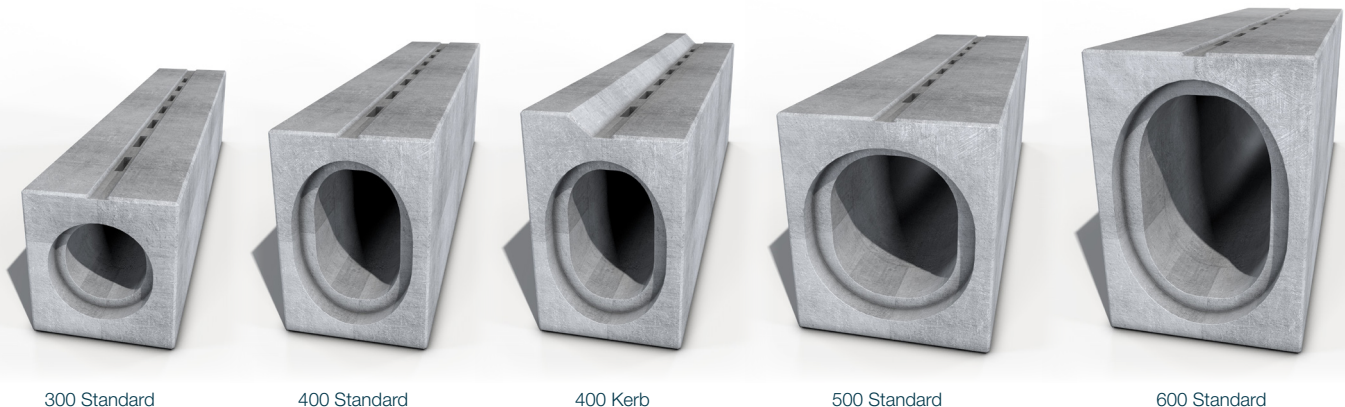
BENEFITS:

- Quick installation
- Minimal maintenance
- Excellent flow rates even at zero or shallow gradients
- Modular system
- Robust product
- Economical product
- Integrated watertight seal
- No concrete surround required
- Conforms to EN 1433

FEATURES:

- Resilient up to Class D400
- 300 and 400 Standard StormChannel™ tested to Class E600
- 2% surface slope to the slot
- Supplied with interrupted slot only – slot width 30mm
- Spigot and socket end for correct alignment and joining

Additional connections can be provided on request. Junction box sump unit also available in all sizes.



300 Standard

400 Standard

400 Kerb

500 Standard

600 Standard