

# rainwater harvesting chambers



Technical helpline 01530 240000  
fpmccann.co.uk/drainage

## Drainage and Water Management Solutions

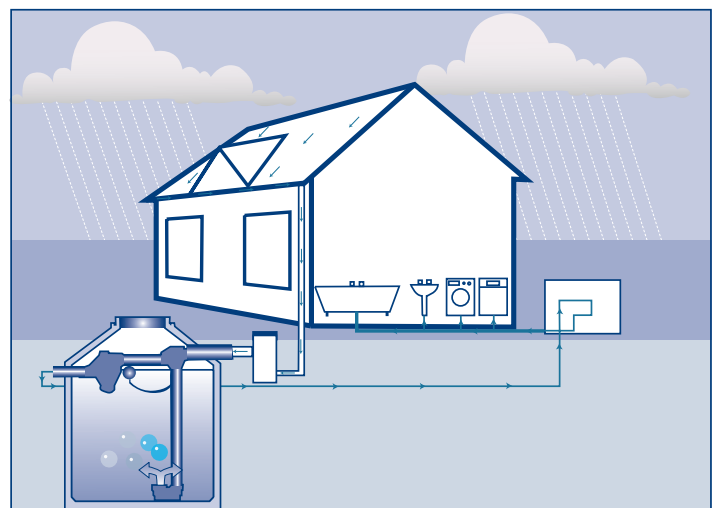
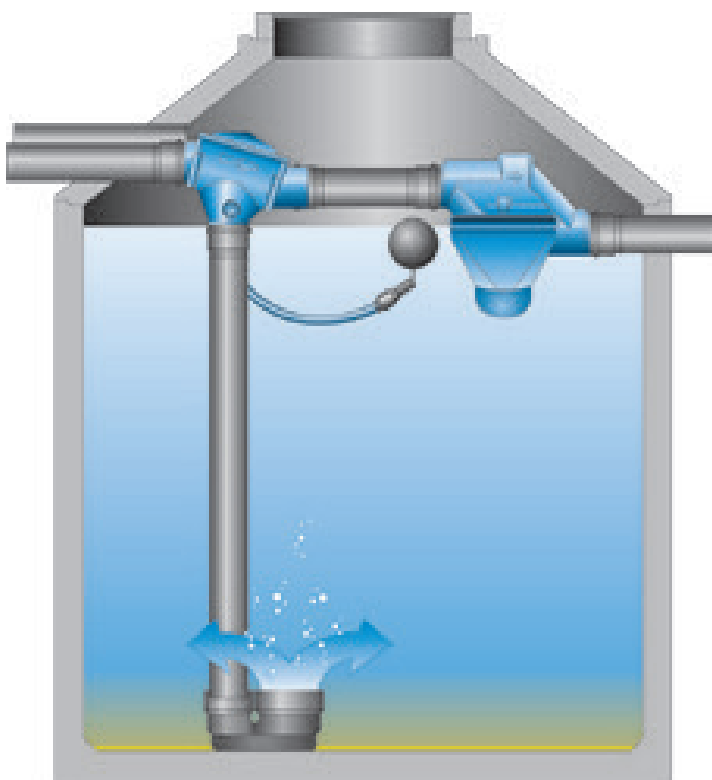
FP McCann has developed a domestic and commercial rainwater harvesting tank designed to reduce demands on the mains network by providing a sustainable water collection and distribution system ideal for non-potable uses such as toilet flushing, washing and landscape or garden watering. Typically, up to 50 litres a day per person of waste water can be saved in an average domestic household.

Our rainwater harvesting tank also helps ease the growing pressure on the UK's water infrastructure by capturing water run-off thereby reducing flood risk in an already overloaded drainage network. The controlled management of rainwater run-off is key to the Environment Agency's SuDS (Sustainable Urban Drainage Solutions) directive. Future domestic, commercial and industrial developments will be subject to planning guidelines that strongly feature SuDS initiatives. Our rainwater harvesting tank is one sustainable solution in the water conservation challenge.

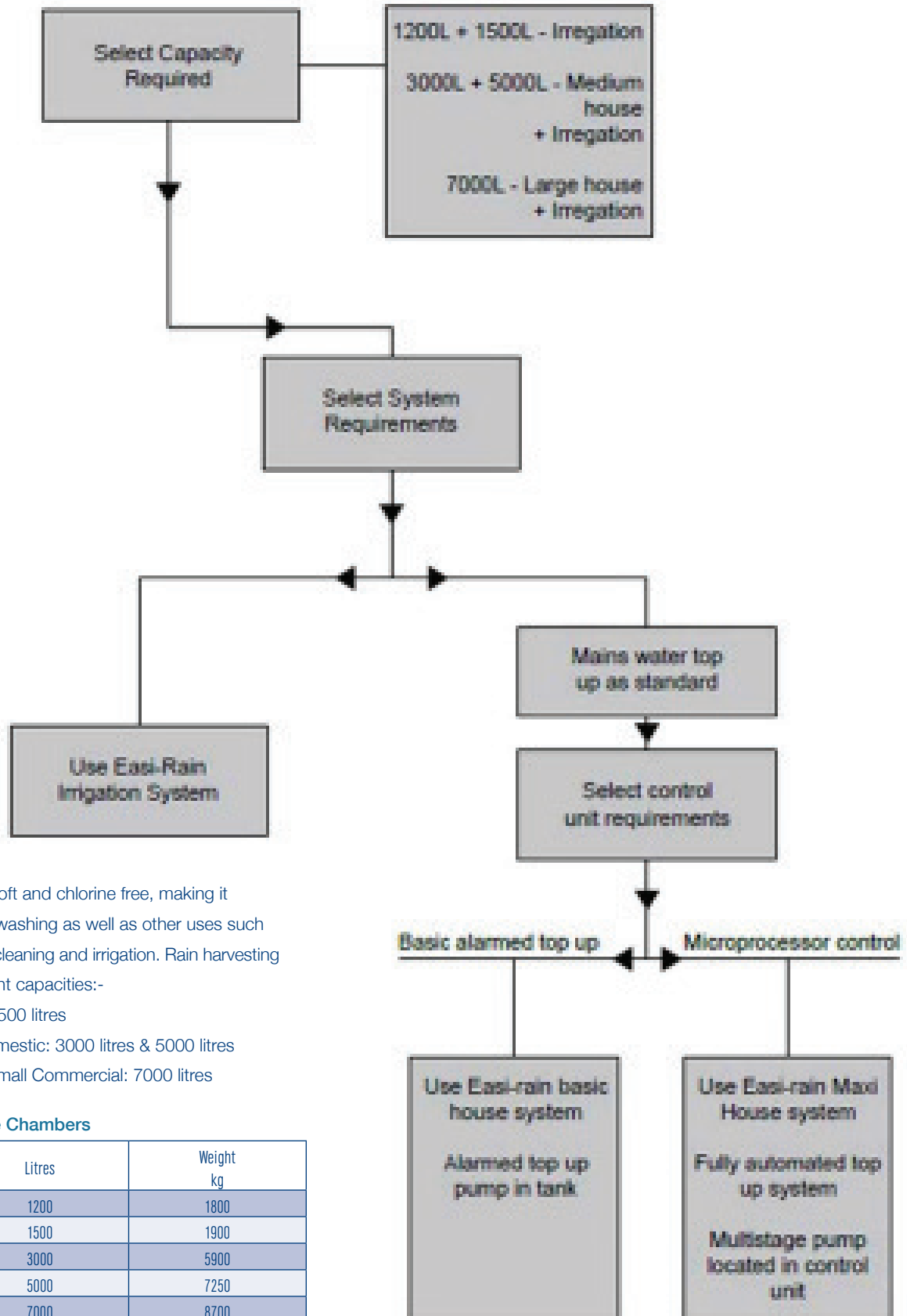
Our rainwater harvesting chamber is part of FP McCann's environmental range of waste water management products.

### Advantages and Environmental Benefits:

- Cost effective re-use of a natural resource
- Conservation of mains water supplies
- Complies with SuDS directives
- Unobtrusive (buried underground)
- Speedy installation – No ready mixed concrete backfill required
- Low maintenance
- 120 year design life on concrete tank



## Rainwater Harvesting Chambers System - Decision Chart



The filtered rainwater is very soft and chlorine free, making it particularly suitable for fabric washing as well as other uses such as toilet flushing and external cleaning and irrigation. Rain harvesting tanks are available in 5 different capacities:-

Irrigation Only: 1200 litres & 1500 litres

Irrigation & Small/Medium Domestic: 3000 litres & 5000 litres

Irrigation & Large Domestic/Small Commercial: 7000 litres

### Volume Capacity of Storage Chambers

Internal Diameter (x1000mm)	Litres	Weight kg
DN1800	1200	1800
DN1800	1500	1900
DN2400	3000	5900
DN2400	5000	7250
DN2400	7000	8700